

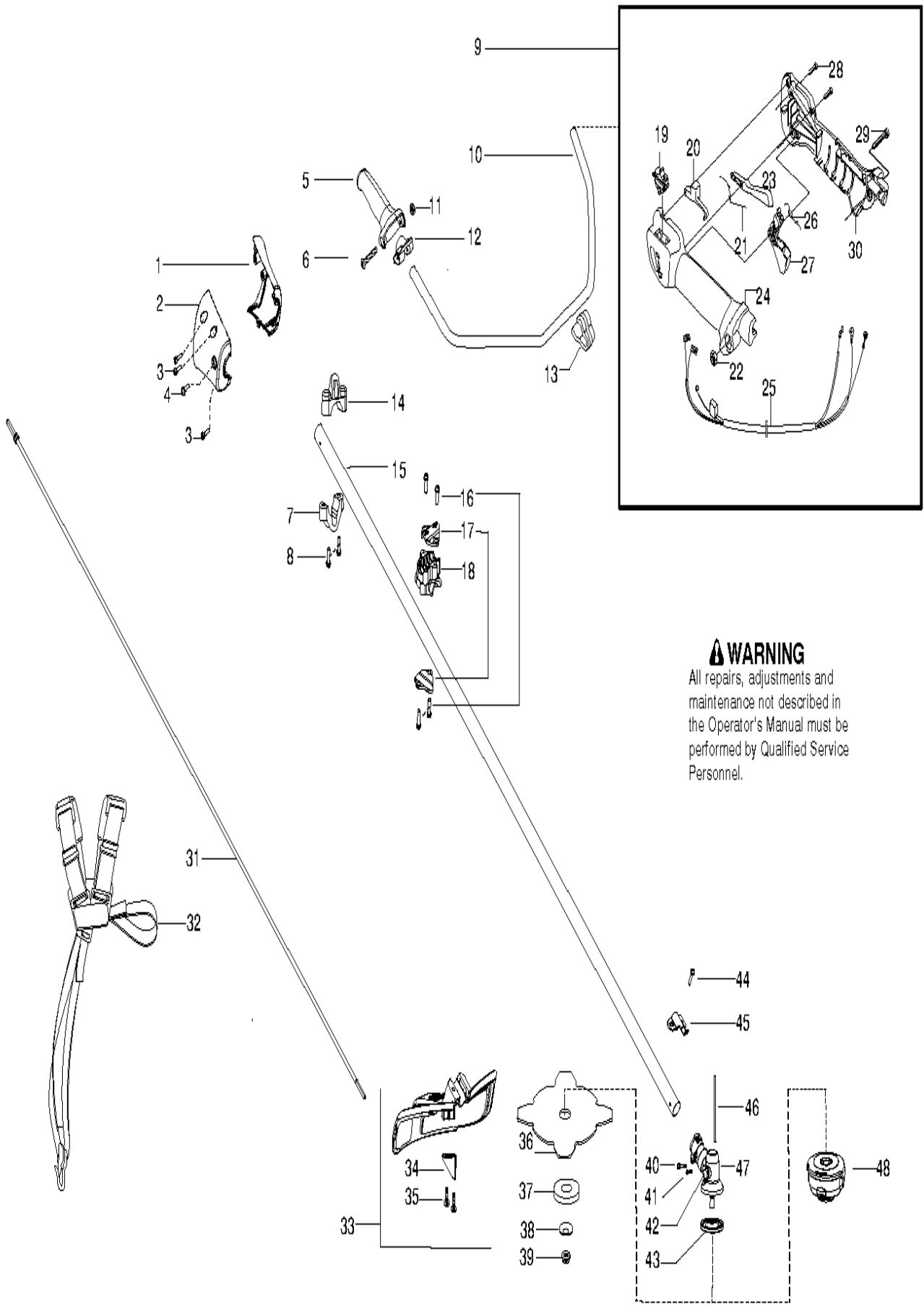
HUSQVARNA - SPARE PARTS CATALOG
BRUSHCUTTERS/CLEARING SAWS: HUSQVARNA 128 R

Sparepartslist

SPAREPARTSLIST

BRUSHCUTTERS/CLEARING SAWS

HUSQVARNA 128 R



⚠ WARNING

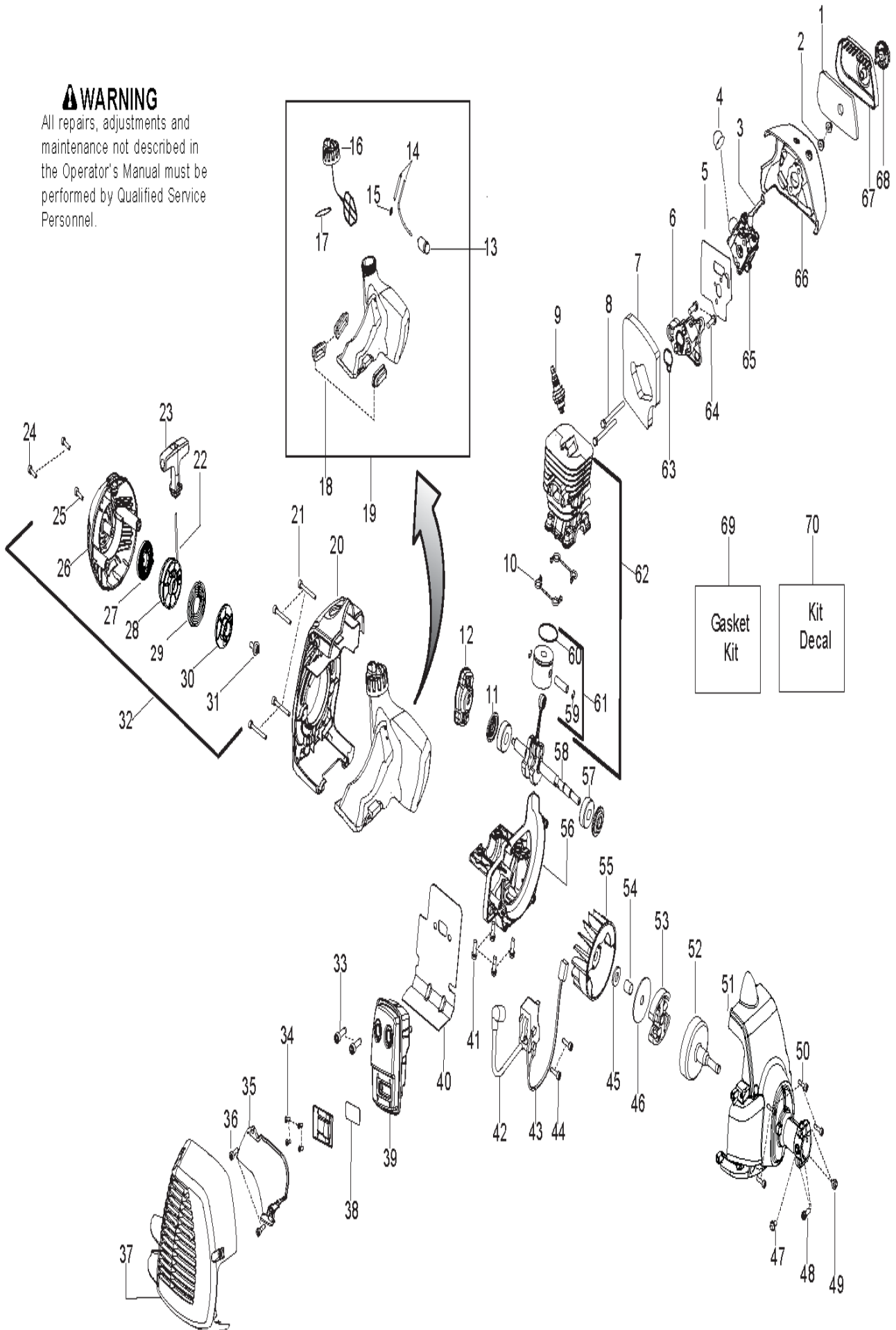
All repairs, adjustments and maintenance not described in the Operator's Manual must be performed by Qualified Service Personnel.

BRUSHCUTTERS/CLEARING SAWS

PXM_REF	PXM_PARTNO	DESCRIPTION	PXM_REMARK	QTY	
1	574810701	CONE	2010-72N AND LOWER, SEE SERVICE REFERENCE	1	
2	574810301	CONE	2010-72N AND LOWER, SEE SERVICE REFERENCE	1	
3	530016449	SCREW	2010-72N AND LOWER, SEE SERVICE REFERENCE	1	
4	530015805	SCREW	2010-72N AND LOWER, SEE SERVICE REFERENCE	1	
5	537172802	HANDLE		1	
6	503200245	SCREW IHSCFM		1	
7	545056601	CLAMP		1	
8	530015940	SCREW		1	
9	545125501	THROTTLE ASSY		1	19-30
10	502199503	HANDLEBAR		1	
11	731231401	HEXAGON NUT		1	
12	537172901	COVER		1	
13	502211201	STAPLE		1	
14	545113301	CLAMP		1	
15	575776101	KIT		1	
16	530015814	SCREW		1	
17	530058563	BRACKET		1	
18	545058501	BRACKET		1	
19	537419001	SWITCH		1	
20	537160703	THROTTLE LOCKOUT		1	
21	537174301	SPRING		1	
22	503221013	HEXAGON NUT		1	
23	506495101	THROTTLE LOCKOUT		1	
24	537160203	HANDLE HALF		1	
25	545125801	CABLE ASSY		1	
26	537174201	SPRING THROTTLE TRIG		1	
27	506495001	THROTTLE CONTROL		1	
28	503216618	SCREW IHSCF		1	
29	503200735	SCREW IHSCFM		1	
30	537160301	HANDLE HALF		1	
31	545007507	SHAFT		1	
32	537216301	HARNESS		1	
33	545030901	COMBINATION GUARD		1	34, 35, 43
34	530052286	LINE		1	
35	530015814	SCREW		1	
36	504001303	GRASS BLADE		1	
37	503890101	SUPPORT CUP		1	
38	537285601	SUPPORT FLANGE		1	
39	503856301	NUT		1	
40	530016014	SCREW		1	
41	545003902	SCREW		1	
42	575724601	PLUG		1	
43	537234901	DRIVER ASSY		1	
44	530015771	SCREW		1	
45	530057554	BRACKET		1	
46	502285901	STOP		1	
47	530096295	BEVEL GEAR		1	
48	537338306	TRIMMER HEAD		1	

⚠ WARNING

All repairs, adjustments and maintenance not described in the Operator's Manual must be performed by Qualified Service Personnel.



BRUSHCUTTERS/CLEARING SAWS

PXM_REF	PXM_PARTNO	DESCRIPTION	PXM_REMARK	QTY
1	530150253	AIR FILTER		1
2	530016101	NUT		1
3	530057844	LEVER		1
4	530058709	BULB		1
5	545008084	GASKET KIT		1
6	530035596	ADAPTER		1
7	545008084	GASKET KIT		1
8	530016400	BOLT		1
9	952030201	SPARK PLUG		1
10	545008084	GASKET KIT		1
11	545008084	GASKET KIT		1
12	503873305	STARTER PAWL		1
13	577167201	FUEL FILTER		1
14	530069599	HOSE		1
15	530023877	NIPPLE		15
16	530150350	TANK		1
17	545008084	GASKET KIT		17
18	530059780	INSULATOR		1
19	545180870	FUEL TANK ASSY		1
20	576153201	SHROUD		1
21	530016448	SCREW		1
22	545008079	STARTER ROPE KIT		1
23	545043204	STARTER HANDLE		1
24	530016426	SCREW		1
25	530016449	SCREW		1
26	525455501	HOUSING		1
27	545008087	SPRING		1
28	585530301	STARTER PULLEY		1
29	578465101	SPRING		1
30	579366201	PULLEY		1
31	530016468	SCREW		1
32	579063101	STARTER HOUSING		1
33	530058982	BOLT		1
34	530015241	SCREW		1
35	530150440	HEAT SHIELD PROTECTOR		1
36	530016449	SCREW		1
37	576215001	MUFFLER GUARD		1
38	545030501	SCREEN		Incl.
39	574031402	MUFFLER KIT		34
40	545008084	GASKET KIT		1
41	530015897	SCREW		1
42	545046701	IGNITION MODULE		1
43	530039227	SHORTING LEAD		1
44	530016456	SCREW		1
45	530016463	WASHER		1
46	530094189	WASHER		1
47	530015805	SCREW		1
48	530015774	SCREW		1
49	530015768	NUT		1
50	530016456	SCREW		1
51	545205201	FAN HOUSING		1
52	530150039	CLUTCH DRUM SERVICE KIT	S/N ≤ 2012-090N	1
52	580446601	CLUTCH DRUM SERVICE KIT	S/N ≥ 2012-091N	1
53	530055122	CLUTCH ASSY		1
54	530057852	RING		1
55	530039242	FLYWHEEL		1
56	577929502	CRANKCASE		1
57	545013401	BEARING		1
58	585415401	CRANKSHAFT	S/N ≤ 2012-020N	1
58	585415402	CRANKSHAFT	S/N ≥ 2012-021N	1
59	530015162	WRIST PIN RETAINER		1
60	575227901	RING		1
61	545081814	PISTON		1
62	545008083	CYLINDER & PISTON ASSY		1
63	545008084	GASKET KIT		61
64	530015897	SCREW		1
65	545081848	CARBURETOR KIT		1
	504811801	GASKET KIT	ZAMA CARBURETOR	3.4. 5
66	576459001	BASE		1
67	530057846	COVER		1
68	530059796	KNOB ASSY		1
69	545008084	GASKET KIT		1
70	545003352	DECAL KIT		1
71	545173401	BEARING	S/N ≤ 2012-090N	1
72	530016420	WASHER - THRUST	S/N ≤ 2012-090N	1